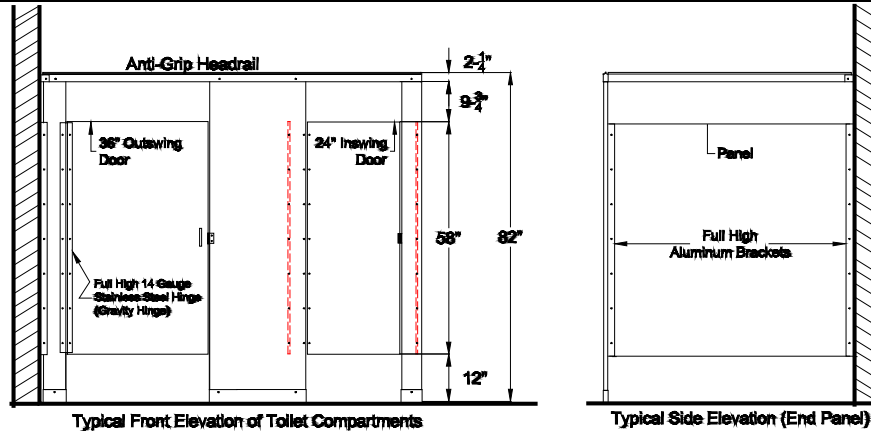


COLUMBIA PHENOLIC®

Series: 72835 Class A
Technical Data Sheet

Solid Phenolic Overhead Braced Toilet Partitions



Materials: Material shall be Class A Fire Rated Phenolic with a High Pressure Melamine matte finish surface made as an integral part of the core material. Laminated surfaces are not acceptable. Surface and edges shall be non-porous and shall not support fungus or bacteria. Provide material which has been selected for uniform color, surface flatness and smoothness. Exposed surfaces which exhibit discolorations, pitting, seam marks, roller marks, stains, telegraphing of core material, or other imperfections on finished units are not acceptable. Defects such as chipping along edges and corners are unacceptable. Class A Fire Rated Phenolic shall meet or exceed all requirements for Class A Flame Spread Rating and Smoke Developed calculated according to ASTM E84. Materials shall contribute to LEED Certification credits. MR 5.1 & 5.2, EQ 4.4

Material Thickness and Heights:

Doors – Minimum .75" (19 mm) Finished Thickness
Divider Panels – Minimum .75" (19 mm) Finished Thickness
Pilasters – Minimum 1.00" (25 mm) Finished Thickness

Hardware:

Continuous Hinge: Continuous Hinge (57.5") shall be made of Type 304, 14 Gauge Stainless Steel and shall have a Polished Satin Finish. Hinge shall be 3" wide and shall have cam knuckles for gravity type self-closing action. Pivot pin shall be .250" in diameter, and shall be made of Type 304 Stainless Steel. Hinges shall provide emergency access by lifting the door. Inswinging Hinges shall be preset to hold Door open at 15 degrees and Outswinging Hinges shall be preset to hold Doors in the closed position when unlatched. Hinges shall be pre-drilled for mounting to door and pilaster. Mounting holes shall be at 9" O.C. for mounting to door and pilaster with Theft Proof Stainless Steel Torx Head with Pin Through-Bolts. Brass inserts are unacceptable. Each Hinge is to be labeled by stock number, manufacturer, and left or right hand.

Slide Latch: Slide Latch shall be Heavy Duty Type 304 Cast Stainless Steel with a Polished Satin Finish. The Slide Latch shall be surface mounted and shall require less than five (5) lbs to operate. The slide bar shall be .150" (3.81 mm) thick, 1.020" wide and 3.720" long. Latch shall have an internal Stainless Steel buffering spring to prevent damage when door is inadvertently slammed against the Latch. Mounting holes are to be spaced at 3.50" O.C. Latch knob is to be riveted to the slide bar and then welded to insure that the knob will not come off. The Slide Latch shall be mounted to the Door with Theft Proof Stainless Steel Torx Head with Pin Through-Bolts. Stamped Stainless Steel Slide Latches (with or without plastic or nylon parts) are unacceptable. The stock number shall be molded into the back of the Slide Latch for ease in identification.

Continuous Mounting Brackets: Brackets shall be Full High (57.5"), Type 304 Stainless Steel and shall have a Polished Satin Finish. Continuous Double Ear and Single Ear Brackets shall be used to mount panel/pilaster to wall. Continuous 'U' Brackets shall be used to mount panel to pilaster. Inside opening of Bracket shall be .50" for panels and .75" for pilasters. All holes in Brackets for mounting to wall and panel/pilaster shall be pre-drilled. Holes are to be spaced at 9" O.C. along the full length of the Bracket for a total of fourteen (14) holes for mounting to wall, and seven (7) for mounting to panel or pilaster. Panels and Pilasters shall be secured to Brackets with Theft Proof Stainless Steel Torx Head with Pin Through-Bolts. Attachments made with screws into core material are unacceptable. Brackets made of Aluminum, Chrome Plated Zamac or Single High Stamped Stainless Steel are unacceptable.

The manufacturer reserves the right, without formal notification, to implement changes to the design and dimensions. © 2018 Columbia Partitions, Manufactured by of PSISC Series: 72835

**COLUMBIA
LOCKERS®**
MANUFACTURED BY PSISC®

825 Garland St. Columbia, SC 29201
Phone: 1-866-337-7286 Fax: 1-866-337-7291
Web Site: www.psisc.com