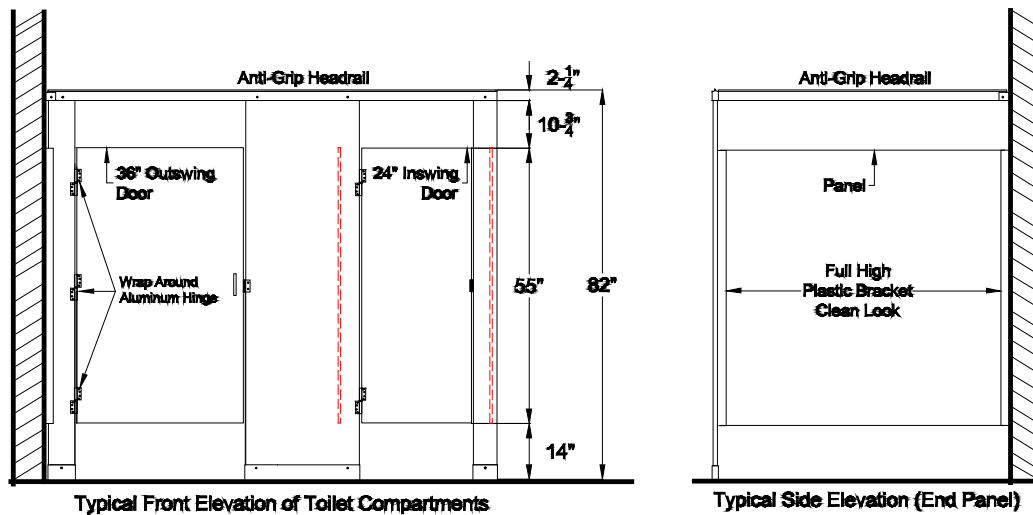


# COLUMBIA PHENOLIC®

## Series: 19647 Class B Technical Data Sheet

### PolyLife® Overhead Braced Toilet Partitions



**Materials:** Material shall be Columbia PolyLife® Plastic HDPE. PolyLife® shall be waterproof and nonabsorbent and shall have a self-ubricating surface to resist marks from pens and other writing instruments. Provide material which has been selected for surface flatness and even texture. Exposed surfaces which exhibit pitting, seam marks, roller marks, stains, telegraphing, or other imperfections on finished units are not acceptable. Columbia PolyLife® Plastic HDPE shall meet or exceed all requirements for Class B Flame Spread Rating and Smoke Developed calculated according to ASTM E84, and shall carry a Class B Fire Rating Certification. Aluminum Heat Sink is not required for Class B Fire Rated materials. Materials shall contribute LEED® Certification credits for New Construction, Existing Buildings and Schools. MR 2.1, 2.2, 4.1, 4.2, 5.1 & 5.2, and EQ 4.

#### Material Thickness and Heights:

Doors – Minimum 1.00" (25 mm) Finished Thickness, 55" High  
Divider Panels – Minimum 1.00" (25 mm) Finished Thickness, 55" High  
Pilasters – Minimum 1.00" (25 mm) Finished Thickness, 82" High

#### Hardware:

**Wrap Around Aluminum Hinge:** Aluminum Wrap Around Hinges shall be made of Extruded 6063-T5 Aluminum with a Satin Anodized Finish. Hinges shall be 8.00" high and shall wrap around the edge of the Pilaster and Door. Hinges shall be fully adjustable up to 360 degrees. Pivot pin shall be nylon and shall have a .250" Stainless Steel Center Rod. Hinges shall provide emergency access by lifting the door and shall be pre-drilled for mounting to Door and Pilaster with Theft Proof Stainless Steel Torx Head with Pin Through-Bolts. Each Hinge Set is to be packaged in a separate carton, and is to be labeled by stock number, manufacturer, and left or right hand.

**Slide Latch:** Slide Latch shall be Heavy Duty Extruded 6063-T5 Aluminum with a Satin Anodized Finish. The Slide Latch shall be surface mounted and shall provide emergency access by lifting the door. The slide bar shall be .250" thick, .95" wide and 3.125" long. The slide bar and knob shall have a black anodized finish. Latch shall have an internal buffering spring to prevent damage when door is inadvertently slammed against the Latch. Mounting holes are to be spaced at 3.50" O.C. The Slide Latch shall be mounted to the Door with Theft Proof Stainless Steel Torx Head with Pin Through-Bolts.

**Continuous Mounting Brackets:** Brackets shall be Full High (54"), Extruded Plastic HDPE. Brackets shall be available in sixteen (16) Standard Colors to coordinate with Panels and Pilasters. Continuous Double Ear and Single Ear Brackets shall be used to mount Panel/Pilaster to wall. Continuous 'U' Brackets shall be used to mount Panel to Pilaster. Inside opening of Bracket shall be 1.00" for Panels and Pilasters. All holes in Brackets for mounting to wall and Panel/Pilaster shall be pre-drilled. Holes are to be spaced at 12" O.C. along the full length of the Bracket for a total of ten (10) holes for mounting to wall, and five (5) for mounting to Panel or Pilaster. Panels and Pilasters shall be secured to Brackets with Theft Proof Stainless Steel Torx Head Screws. Each Bracket is to have a minimum wall thickness of .1875".

The manufacturer reserves the right, without formal notification, to implement changes to the design and dimensions. © 2018 Columbia Partitions, Manufactured by of PSISC Series: 19647

**COLUMBIA  
LOCKERS®**  
MANUFACTURED BY PSISC®

825 Garland St. Columbia, SC 29201  
Phone: 1-866-337-7286 Fax: 1-866-337-7291  
Web Site: www.psisc.com