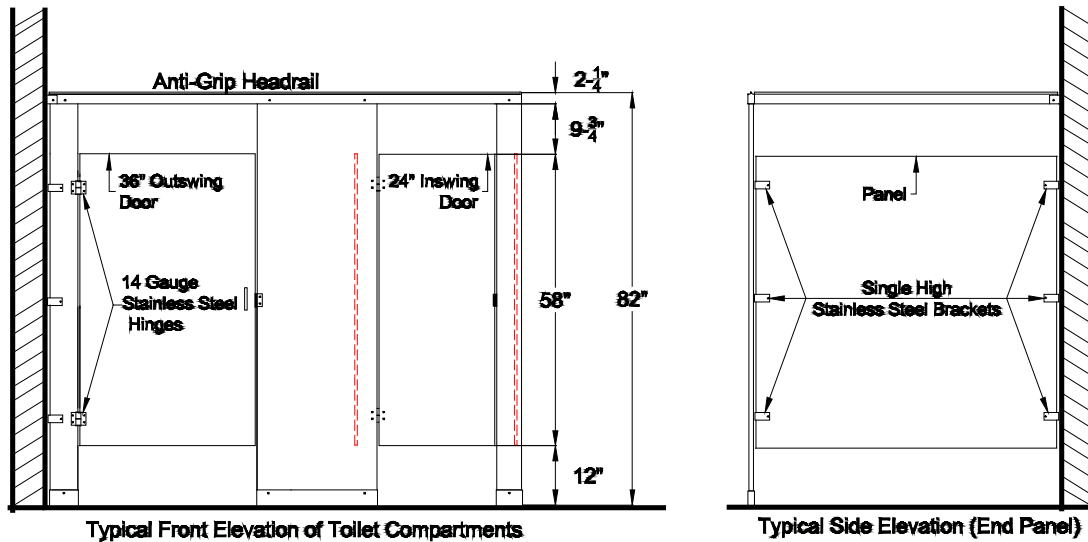


# COLUMBIA PHENOLIC®

Series: 68124 Class A  
Technical Data Sheet

## Solid Phenolic Overhead Braced Toilet Partitions



**Materials:** Material shall be Class A Fire Rated Phenolic with a High Pressure Melamine matte finish surface made as an integral part of the core material. Laminated surfaces are not acceptable. Surface and edges shall be non-Provide material which has been selected for uniform color, surface flatness and smoothness. Exposed surfaces which exhibit discolorations, pitting, seam marks, roller marks, stains, telegraphing of core material, or other imperfections on finished units are not acceptable. Defects such as chipping along edges and corners are unacceptable. Class A Fire Rated Phenolic shall meet or exceed all requirements for Class A Flame Spread Rating and Smoke Developed calculated according to ASTM E84, and shall carry a Class A Fire Rating Certification. Class A Fire Rating Certification shall be in the name of the Toilet Partition Manufacturer to LEED Certification credits. MR 5.1 & 5.2, EQ 4.4.

### Material Thickness and Heights:

Doors – Minimum .75" (19 mm) Finished Thickness

Divider Panels – Minimum .50" (13 mm) Finished Thickness

Pilasters – Minimum .75" (19 mm) Finished Thickness

### Hardware:

**Hinge:** Hinges shall be Type 304, 14 Gauge Stainless Steel and shall have a Polished Satin Finish. Hinge shall be gravity type for self-closing action and shall be fully adjustable up to 360 degrees. Pivot pin shall be made of Type 304 Stainless Steel. Only Stainless Steel components shall be used in the construction of the Hinge. Plastic inserts are unacceptable. Hinges shall provide emergency access by lifting the door. Hinges shall be pre-drilled for mounting to door and pilaster with Stainless Steel Through-Bolts. Each Hinge is to be packaged in a separate carton, and is to be labeled by stock number, manufacturer, and left or right hand.

**Slide Latch:** Slide Latch shall be Type 304, 14 Gauge Stainless Steel and shall have a Polished Satin Finish. The Slide Latch shall be surface mounted and shall require less than five (5) lbs to operate. The slide bar shall be 1.020" wide and 3.720" long. Latch shall have an internal Stainless Steel buffering spring to prevent damage when door is inadvertently slammed against the Latch. Mounting holes are to be spaced at 3.50" O.C. Latch knob is to be pressed into the slide bar and then welded to insure that the knob will not come off.

**Wall Brackets:** Brackets shall be Single High, Type 304, 14 Gauge Stainless Steel and shall have a Polished Satin Finish. Inside opening of Bracket shall be .50" for panels and .75" for pilasters. All holes in Brackets for mounting to wall and panel/pilaster shall be pre-drilled. There shall be two (2) holes for mounting to the wall and one hole for mounting to the panel/pilaster. Panels and Pilasters shall be secured to Brackets with Theft Proof Stainless Steel Torx Head with Pin Through-Bolts.

The manufacturer reserves the right, without formal notification, to implement changes to the design and dimensions. © 2018 Columbia Partitions, Manufactured by of PSISC Series: 68124

**COLUMBIA  
LOCKERS®**  
MANUFACTURED BY PSISC®

825 Garland St. Columbia, SC 29201  
Phone: 1-866-337-7286 Fax: 1-866-337-7291  
Web Site: www.psisc.com