



# 100% Recyclable HDPE PolyLife® Colors

(Columbia PolyLife® is a Solid Plastic HDPE material)



Black Paisley\*  
PL-280



Cement  
PL-200



Cream  
PL-180



Deep Blue\*  
PL-300



Forest  
PL-320



Garnet  
PL-210



Midnight  
PL-290



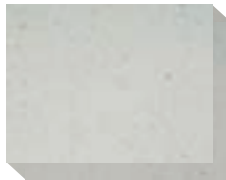
Sand Speckle\*  
PL-120



Sandstone  
PL-330



Slate  
PL-340



Slate Speckle  
PL-130



Taupe  
PL-220

ASTM E84-07 Class B Fire Rated

\*ASTM E84-07 Class A Available

Columbia Guard®, an Antimicrobial Agent, available in both Class A and B Fire Ratings

This brochure contains representations of Columbia PolyLife® colors only. Please request a sample piece to confirm your color choice.

Form: PCC-2001  
(07/11)  
©PSiSC 2011

# 100% Recyclable HDPE PolyLife®

## 20% Post-Consumer & 20% Post Industrial

**PSiSC®** is committed to “Promoting A Greener Environment” and will actively seek out opportunities to safeguard and ensure the sustainability of our Natural Resources. As a member of the US Green Building Council (USGBC®), we are constantly striving to introduce and improve products that contribute to the Leadership in Energy and Environmental Design (LEED®) credits. Using a unique blend of 20% Post-Consumer HDPE and 20% Post Industrial HDPE, **PSiSC®** proudly offers 100% Recyclable HDPE for all of our PolyLife® Toilet Partitions and Lockers. Most importantly to our customers, **PSiSC®** is offering this unique blend of 100% Recyclable HDPE Material at **STANDARD PRICING.**

---

Other Fine Products by **PSiSC®**

**COLUMBIA**  
**PARTITIONS®**  
A Division of **PSiSC®**

**COLUMBIA**  
**LOCKERS®**  
A Division of **PSiSC®**

**COLUMBIA**  
**ACCESSORIES®**  
A Division of **PSiSC®**

**COLUMBIA**  
**TERRACORE®**

**COLUMBIA**  
**GUARD®**